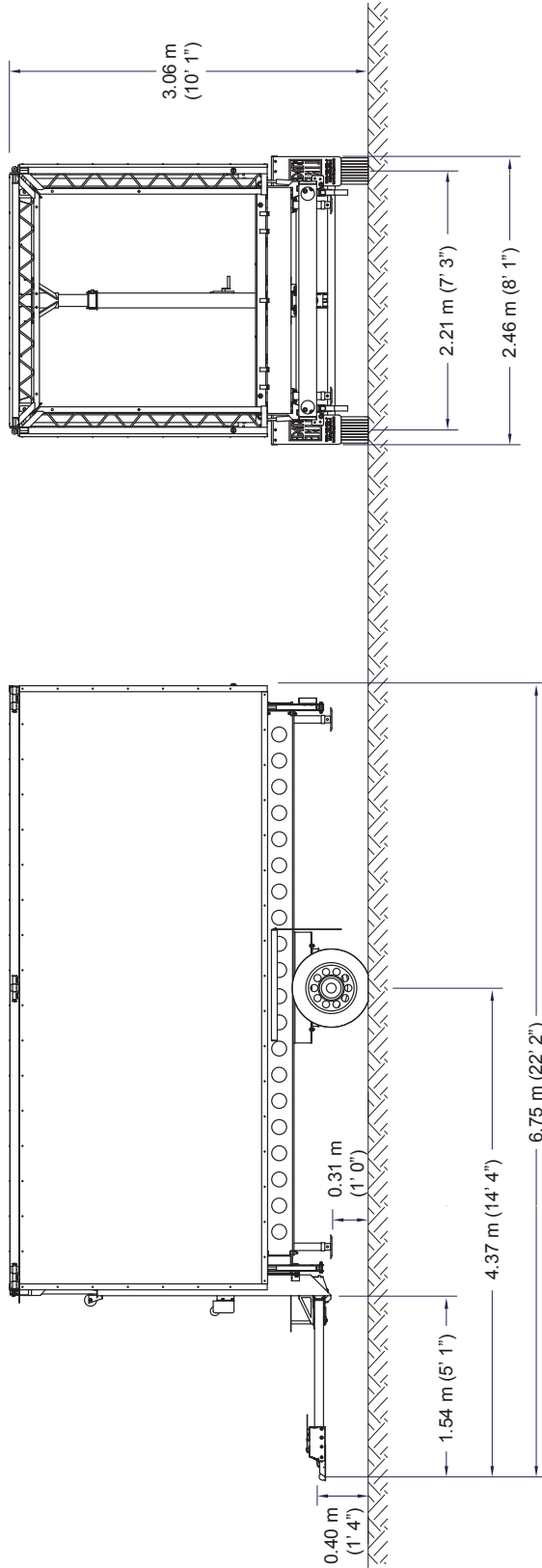
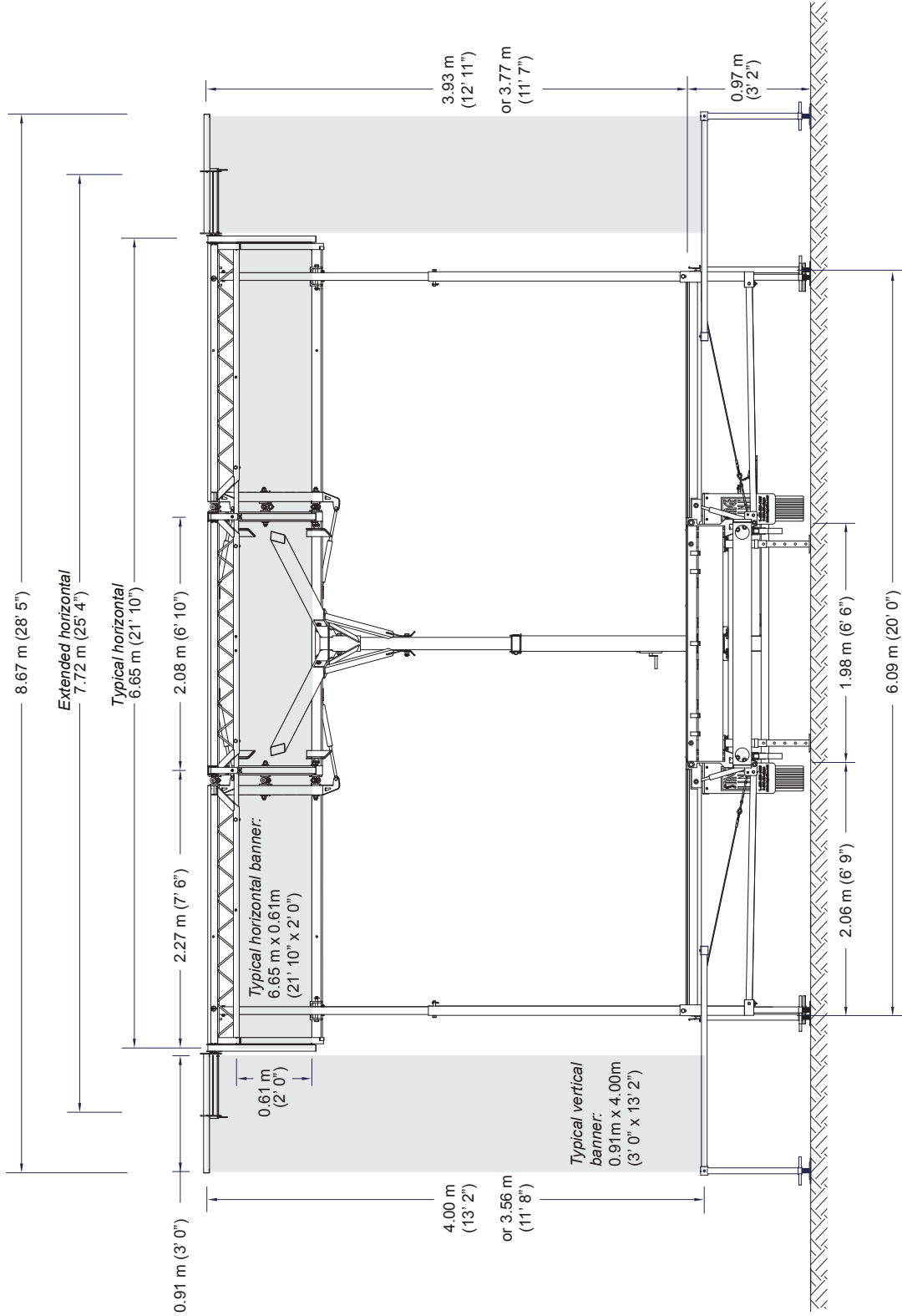


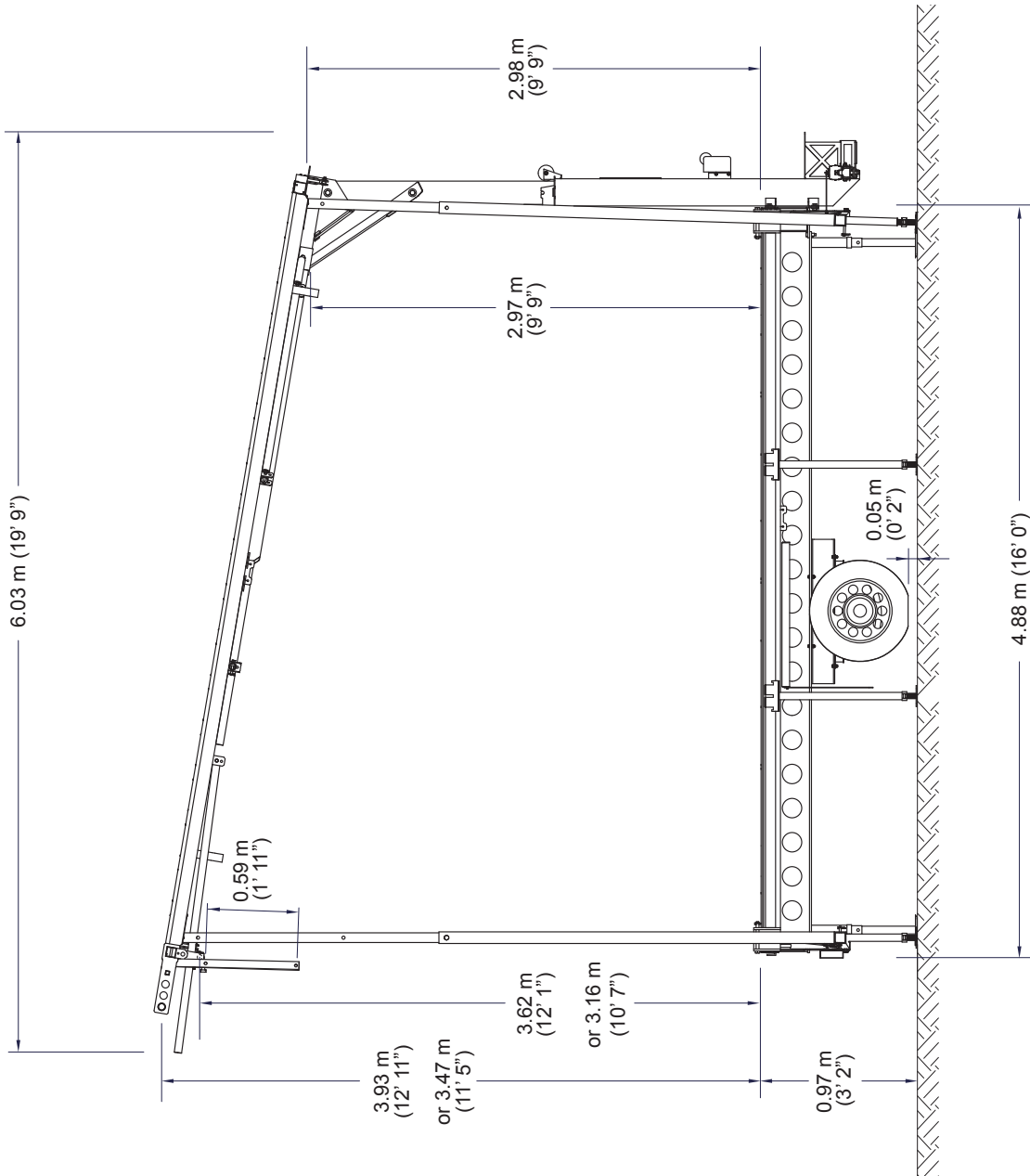
8.1 Trailer Mass and Dimensions



| Mass                    | Unladen |      | Laden |      |
|-------------------------|---------|------|-------|------|
|                         | Lb      | Kg   | Lb    | Kg   |
| Total Mass              | 3750    | 1700 | 5000  | 2270 |
| Mass on Axle            | 2500    | 1136 | -     | -    |
| Allowable Load on Axle  | -       | -    | 5000  | 2270 |
| Mass on Hitch           | 500     | 227  | -     | -    |
| Allowable Load on Hitch | -       | -    | 750   | 340  |

8.2 Front View

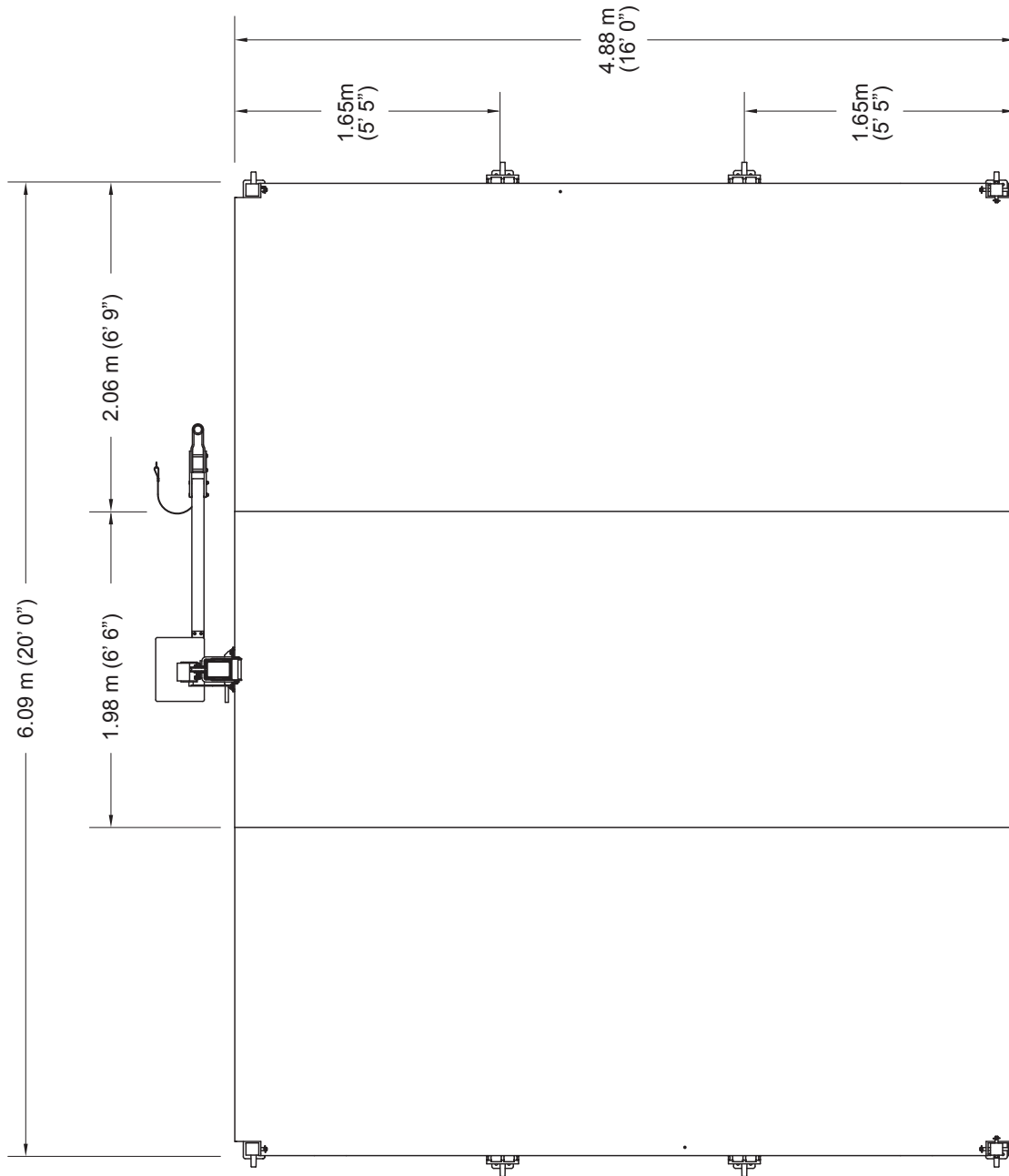




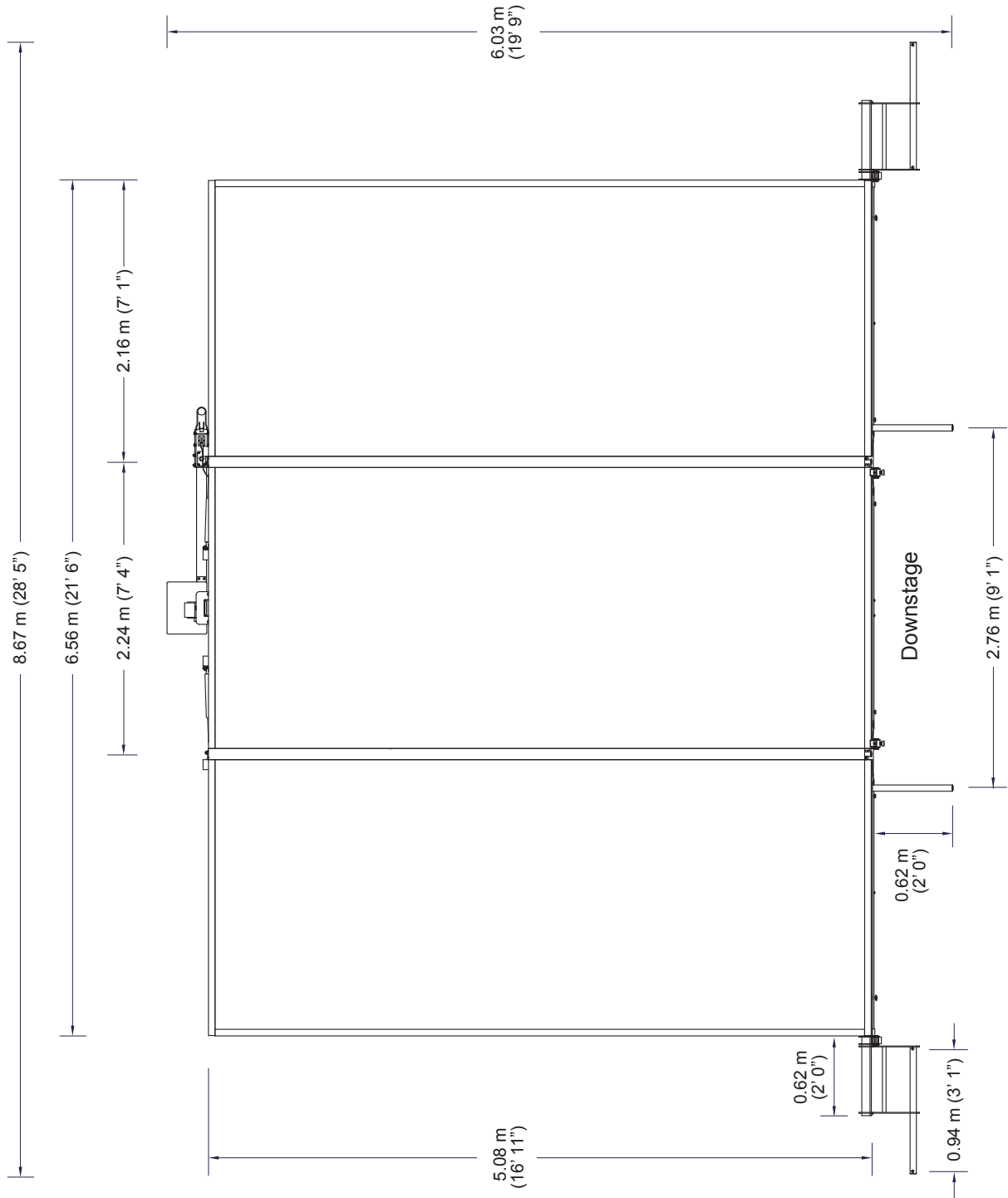


# SL50

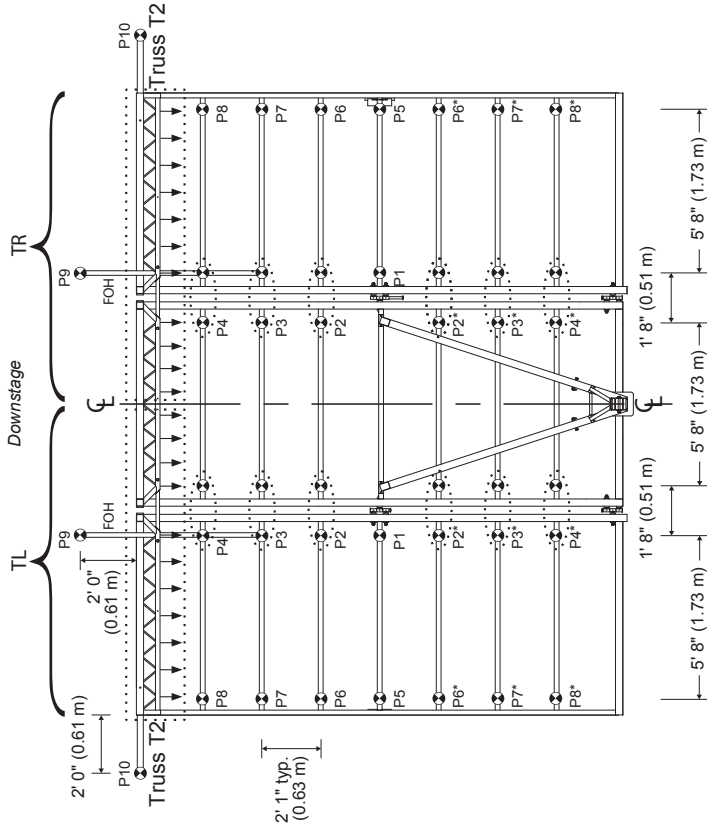
## 8.4 Floor View



Downstage  
Capacity: 100 lb/ft<sup>2</sup> (490 kg/m<sup>2</sup>)



8.6 Rigging Plan



| MAXIMUM LOAD CAPACITY |     |     |
|-----------------------|-----|-----|
| Point No.             | Lb  | Kg  |
| P1, P4 or P4', P5, P8 | 250 | 113 |
| P2 or P2', P3 or P3'  | 150 | 68  |
| P6, P7                | 150 | 68  |
| P9                    | 125 | 57  |
| P10                   | 375 | 170 |
| TL, TR                | 250 | 113 |

A thorough understanding of the inter-related loadings shown in this rigging plan is needed in order to safely use this mobile stage roof and to take full advantage of the many rigging opportunities it offers.

This mobile stage roof offers a variety of rigging options with regard to load capacity, placement and type.

There are rigging pipes, trusses, roof rigging points and side overhang rigging beams.

This rigging plan locates and defines these rigging features, includes load capacity for each and describes maximum combinations of loads amongst features.

Take note of exclusions, maximum sub-totals in a group, load balance requirements, maximum lifting capacity of roof and maximum rigging load on roof.

The maximum load on the roof is less than the sum of the maximum load on each rigging feature.

**MAXIMUM ROOF LIFTING CAPACITY: 200 lb (91 kg)**

**▲ WARNING: Serious damage or injury can occur if lifting capacity is exceeded.**

**MAXIMUM LOAD BEARING CAPACITY: 2500 lb (1130 kg)\***

*With all 4 corner posts installed and telescopic column plinned.*

**RIGGING RESTRICTIONS**

All rigging points must be used in pairs such that the load is symmetric vertically.

Use P2 or P3 or P4. Use P2\* or P3\* or P4\*.

When using P1, do not use P2, P3, P4 nor P2\*, P3\*, P4\*.

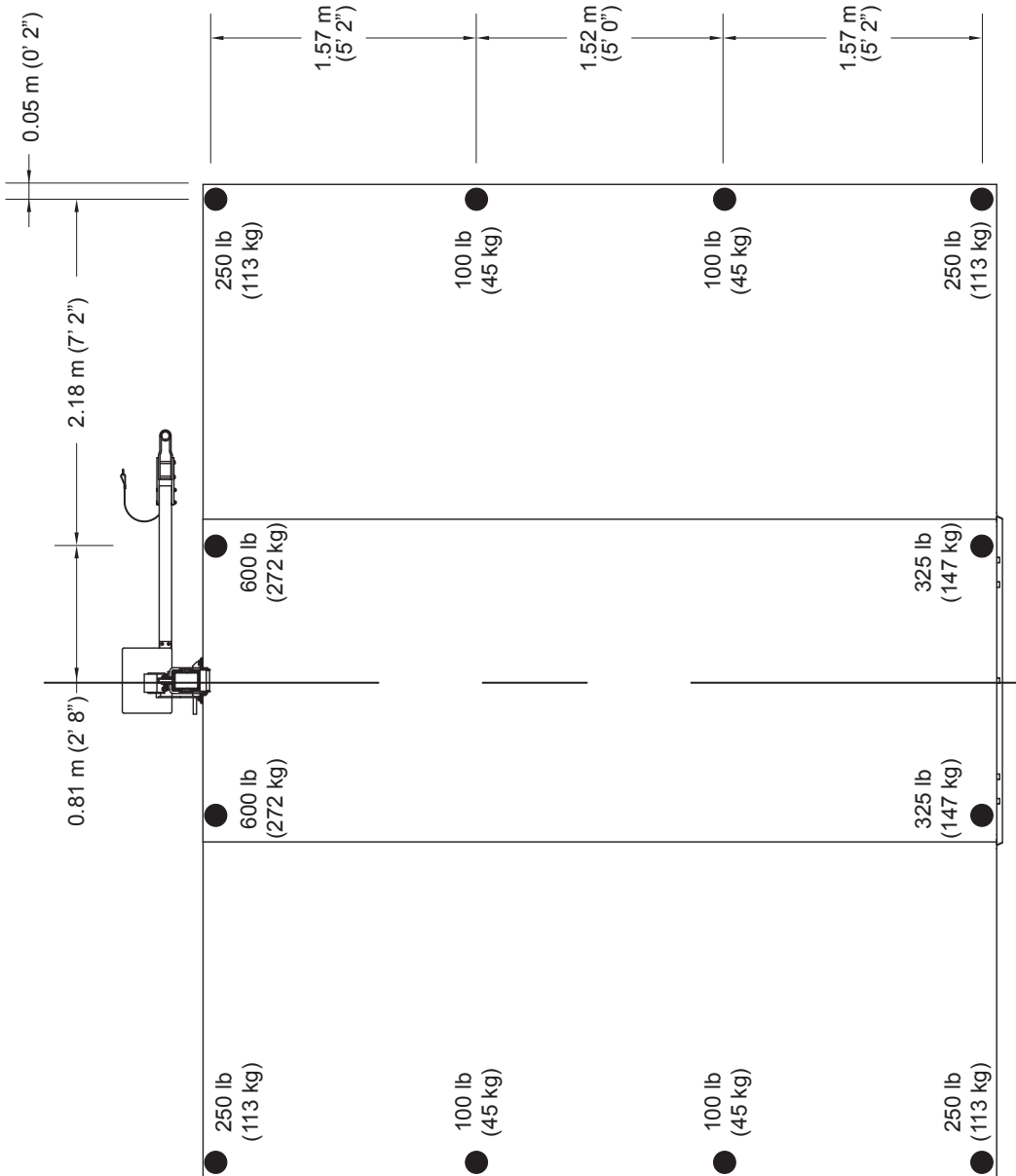
Use P6 or P7 or P8. Use P6\* or P7\* or P8\*.

When using P5, do not use P6, P7, P8 nor P6\*, P7\*, P8\*.

In the TL zone, any point indicated by an arrow can be used.

TL zone must be symmetric with TR zone.

A maximum of 125 lb (57 kg) can be loaded at any place along each FOH pipe.



● : Floor stabilizers, extension and levelling jacks.

Note: For additional live load information, refer to Stageline technical department.